



*Welcome*

to

**Presentation on**

**IT framework for Reviewing and Monitoring of Projects**

**through Control Room**

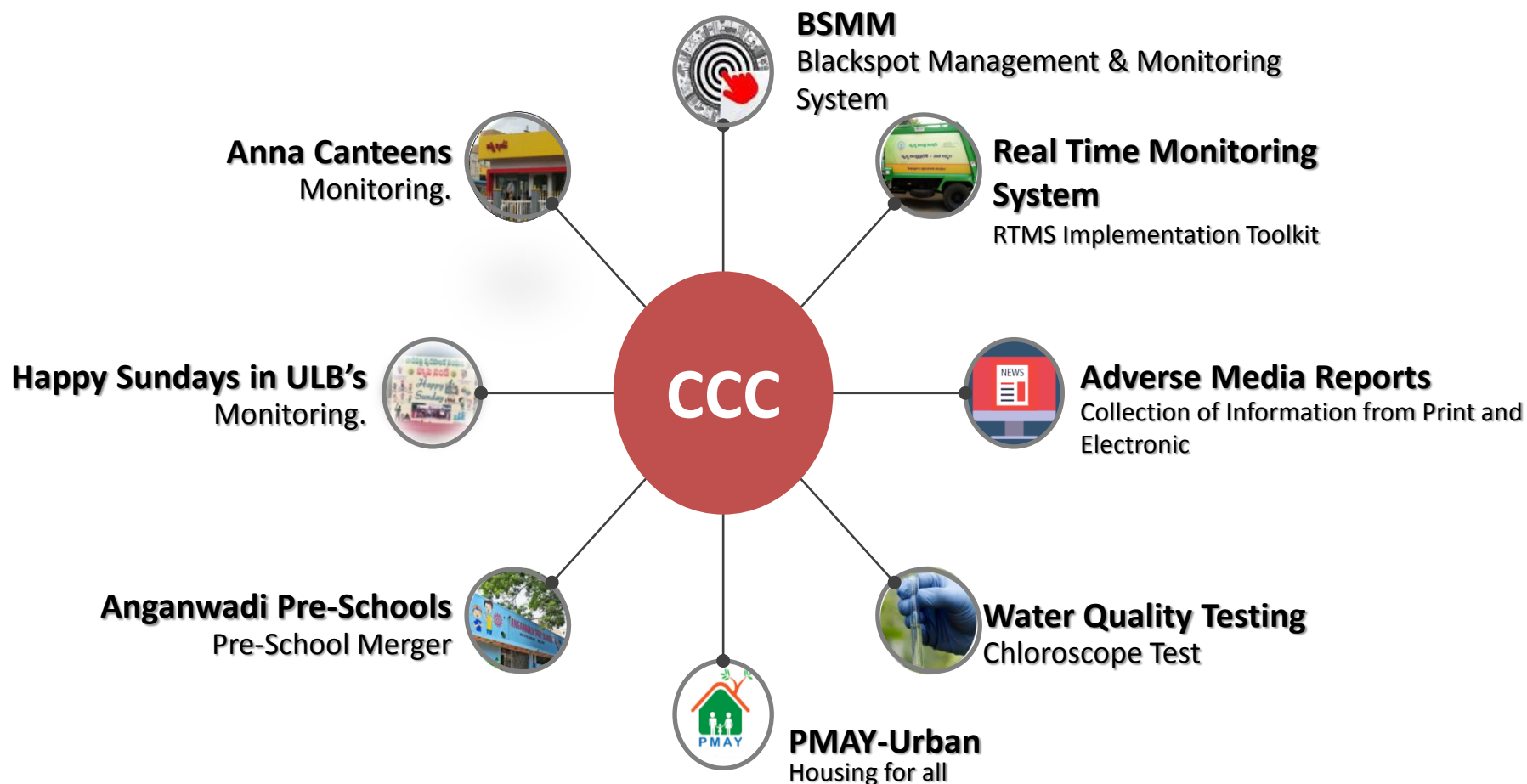


# Achievement...

Item	AHP (No.s)	BLC(No.s)
Sanctioned:	5,29,786	4,28,444
Tendered/AS:	4,60,492	1,45,958
Basement Level:	3,44,251	31,576
Slabs completed:	1,18,530	8,249
Completed with all Finishing:	59,452	44,976



# CCC ACTIVITIES





## LIVE MONITORING

### PMAY-U CONSTRUCTIONS WORKS

APTIDCO HO



<http://103.12.118.6/>



<http://49.156.152.121/>

CC TVs setup at site



<https://remotealert.projecteye.in>



## REVIEW MECHANISM

### ❖ Teleconference

Teleconference will be scheduled with 1 to 2 hrs advance information to all stake holders with an agenda like DLSC approval , Beneficiary Validation, Beneficiary attachment, Construction Progress and PMAY MIS website updation from ULBs and etc.,

### ❖ Video Conference

To see the physical progress in live, video conference will be held using CCC facilities and directions will be given to the people concerned in case of necessity



# Mobile App



spontania

Spontania Server

User

Session ID

host a meeting

**Connect**

© ClearOne 2018 all rights reserved



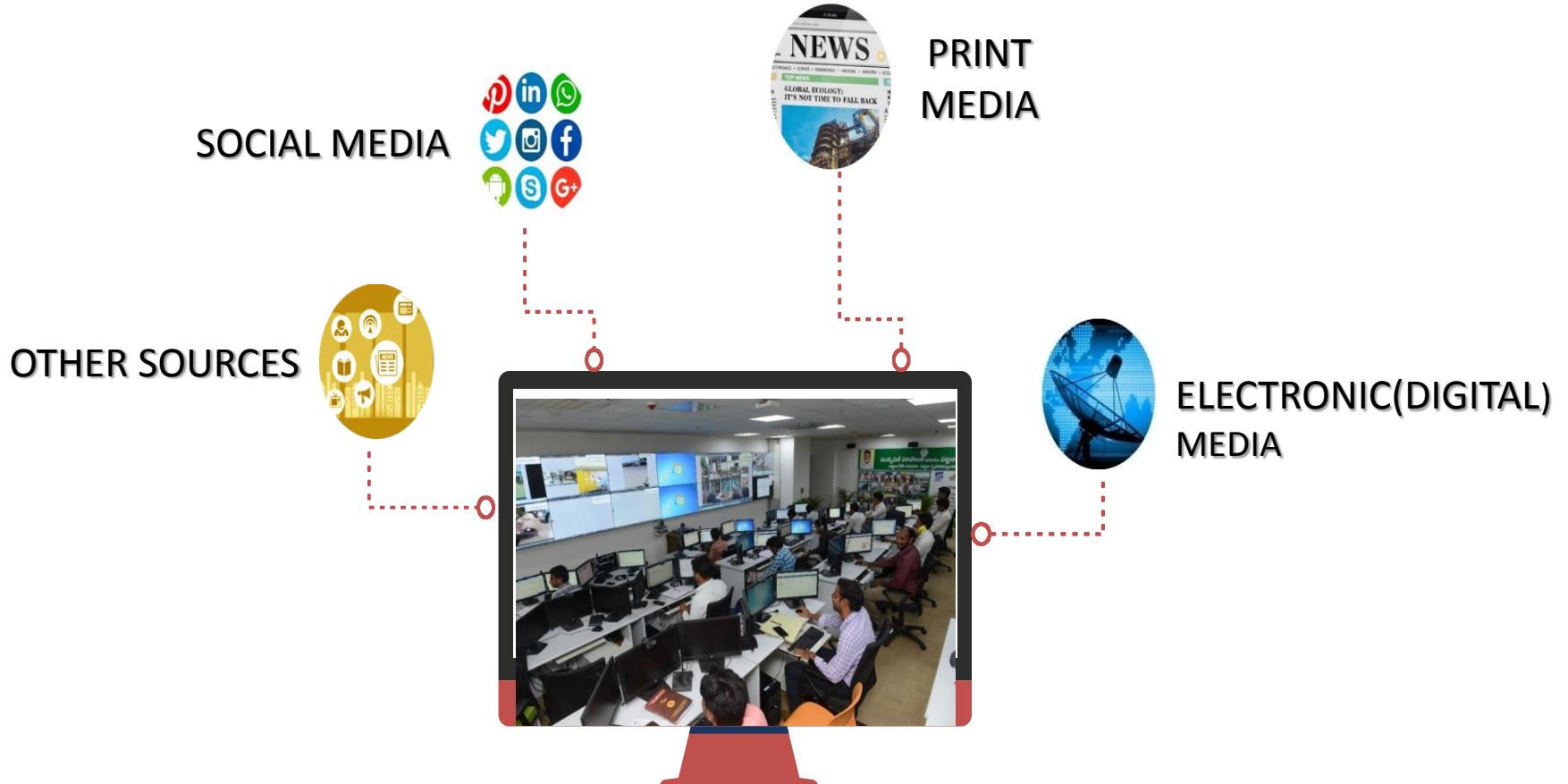
Atmakur.ganesan



Gudur.harinadharaju

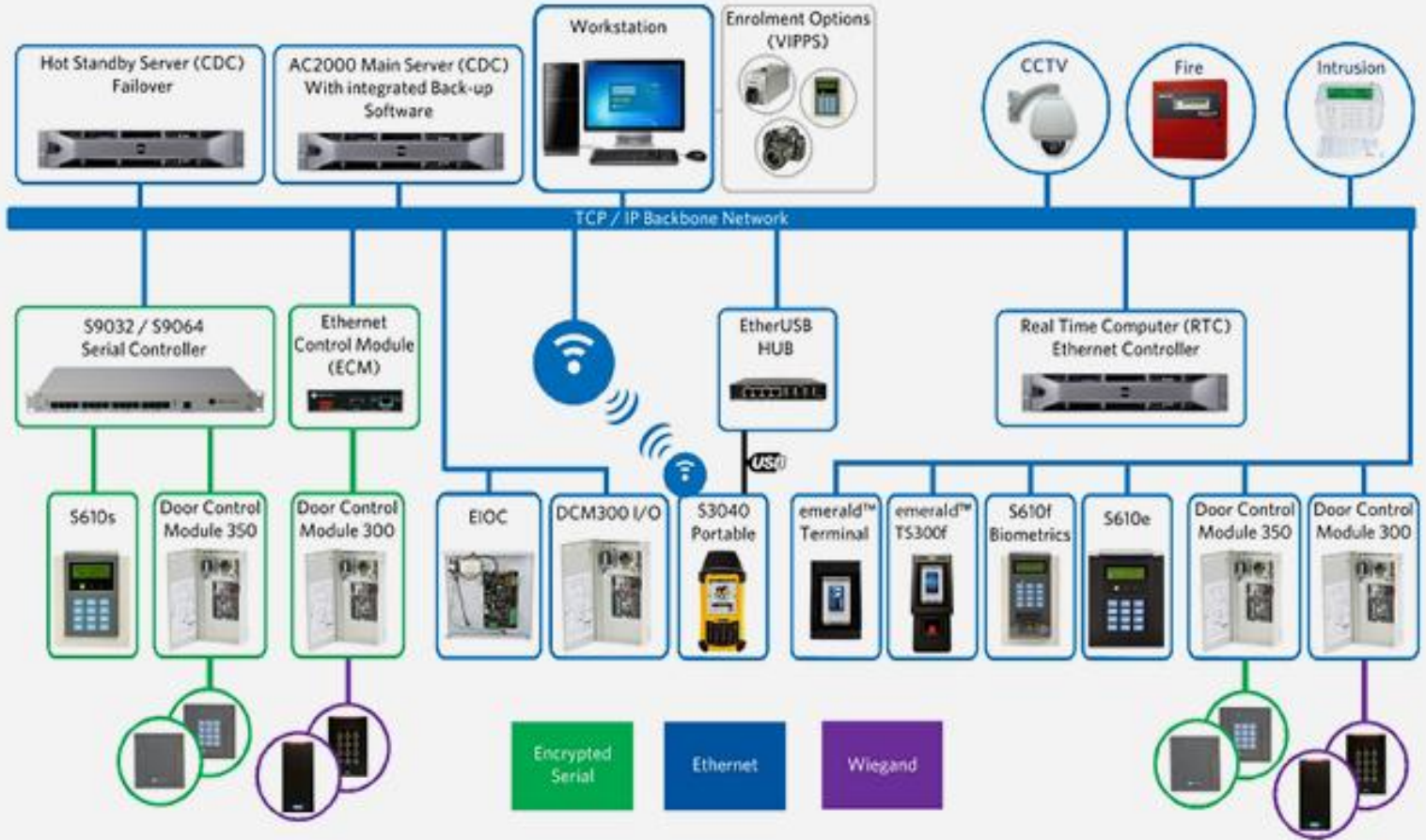


# ADVERSE MEDIA REPORT





Hardware Technology & Components Integrated with Command Communication Center







Hardware Appliances at Command Communication Center



Fire detection/suppression



Environment Monitoring



Leak/Smoke Sensor



Integrated Server rack



Alarm Beacon/Camera POD



Automatic Transfer Switch



Rack mounted UPS

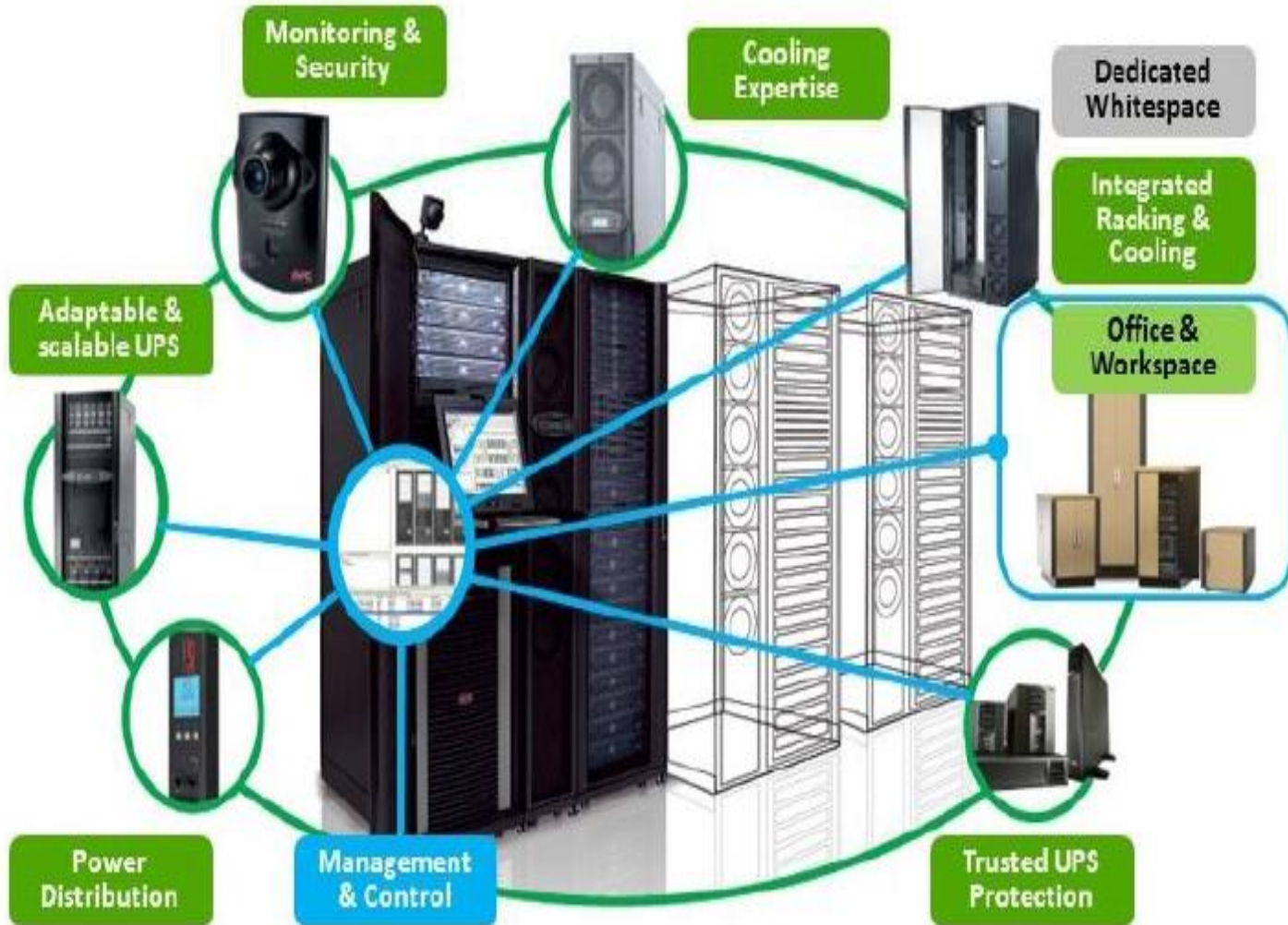


IP PDU



Hardware Technology & Components  
Integrated with Command Communication  
Center

## Server Room





**APTIDCO**

# Advantages

**01**

**Real-time assessment, planning & monitoring of construction sites**

**02**

**Enhanced decision making through mobile and web applications analytics, reporting and tools**

**03**

**CCC acting as a single roof for reporting, monitoring & control**



## Technology Component used for Command Communication Center

For the deployment of the Command Communication Center the following are required

- Space- Min 6000sft Room
- Industrial grade Professional display:LCD/LED/DLP/LASER
- Professional Videowall Controller
- Switcher,
- Scallers,Extenders
- Reclined Monitors&Interactive systems
- Workstations with Minimum dual display
- RTMS servers
- Professional Wireless presentation device
- Industrial grade server
- Online Ups,
- AV equipment
- Air conditioning,
- Fire alarm system,
- Power back up system,
- Racks,
- Firewall,
- Manpower based on the organization and work sizing.



*Thank You*